

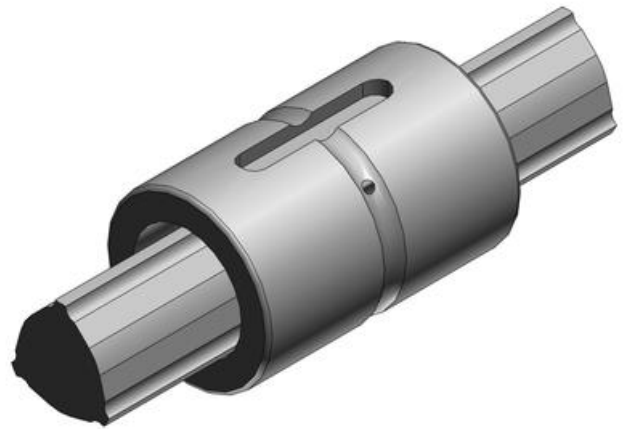


THK - LBS - TORQUE BALL BUSHING

LBS6



- Compact torque bushing with a straight cylindrical spindle nut
- High torque capability
- High speed and quiet
- Long maintenance intervals



PRODUCT DESCRIPTION

Ball bearing bushing LBS has a very compact cylindrical shape.

The spline shaft has three precision slotted tracks, 120° between the bearings.

TECHNICAL DATA

Dynamic load	0,637 kN
Length	20 mm
Outer diameter	12 mm
Static load	0,785 kN